

STATE OF ARKANSAS
STATE HIGHWAY DEPARTMENT

FISCAL YEAR	JOB NO	SHEET NO	TOTAL SHEETS
1928	842	1	10

PLAN OF PROPOSED BRIDGES
ON
BOONEVILLE-STATE SANITORIUM ROAD
LOGAN COUNTY

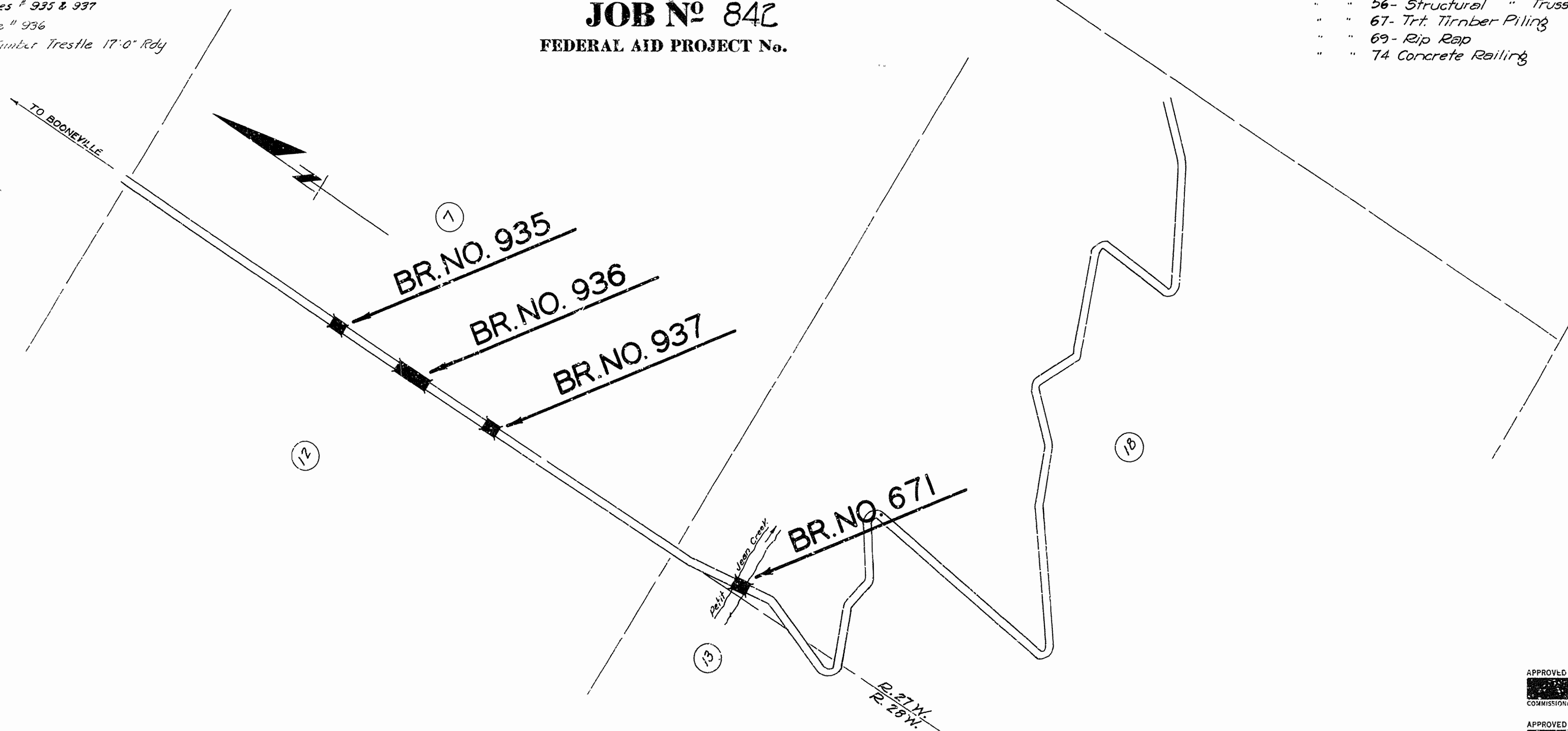
INDEX OF SHEETS

- Sh # 1 Drwg # 905 Title Sheet
- 2 " 906 Layout of Bridge # 671
- 3 " 907 Layout of Piers # 1 & 2 On Bridge
- 4 " 908 " Internal Bents 2, 3, 4, 5 & 6 On Bridge # 671
- 5 " 909 " End Bents # 1 & 7 On Bridge # 671
- 6 " 1054 " 5/d 90'-0" Low Truss Span-18'-0" Rdy.
- 7 " 1018 " " 35'-0" R.C.G. Span- 7 Girders Type -18'-0" Rdy.
- 8 " 910 Layout of Bridges # 935 & 937
- 9 " 911 Layout of Bridge # 936
- 10 " 18 Standard 12'-0" Timber Trestle 17'-0" Rdy

ROUTE # 6 SEC. 1
JOB NO 842
FEDERAL AID PROJECT No.

QUANTITIES

Item No. 13 - Dry Excavation	453 cu. yds.
" " " - Wet "	275 " "
" " " - Rock "	15 " "
" " 52 - Unt. Timber	3,747 M.F.B.M.
" " 52 - Trt. "	88,032 " " "
" " 54 - Class "S" Concrete	298.51 cu yds.
" " 54 - " "7" "	225.33 " "
" " 55 - Reinforcing Steel	24,173 lbs.
" " 56 - Structural " Truss	62,000 "
" " 67 - Trt. Timber Piling	2,468 Lin ft.
" " 69 - Rip Rap	500 Sq. yds.
" " 74 Concrete Railing	490 Lin. ft.



LAYOUT
Scale: 1"=500'

GROSS LENGTH OF PROJECT 0.57-2" = 0.162 Mi
NET LENGTH OF PROJECT 0.57-2" = 0.162 Mi

APPROVED

COMMISSIONER - STATE LANDS, HIGHWAYS AND IMPROVEMENTS

APPROVED

STATE HIGHWAY ENGINEER

RECOMMENDED FOR APPROVAL

DISTRICT ENGINEER - U. S. DEPT. OF PUBLIC ROADS

RECOMMENDED FOR APPROVAL

CHIEF ENGINEER - U. S. BUREAU OF PUBLIC ROADS

APPROVED

DIRECTOR - U. S. BUREAU OF PUBLIC ROADS

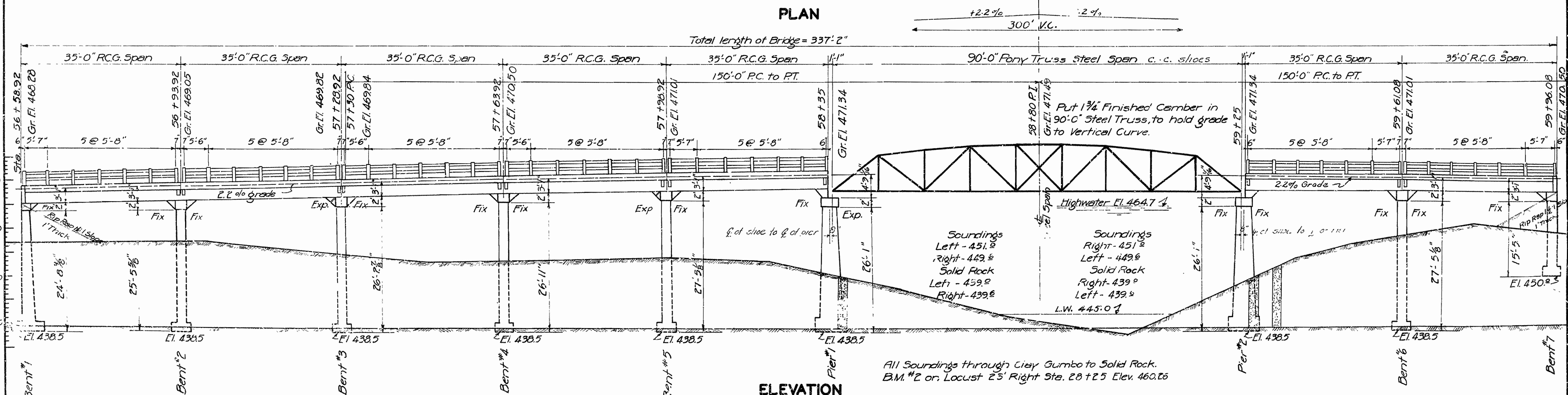
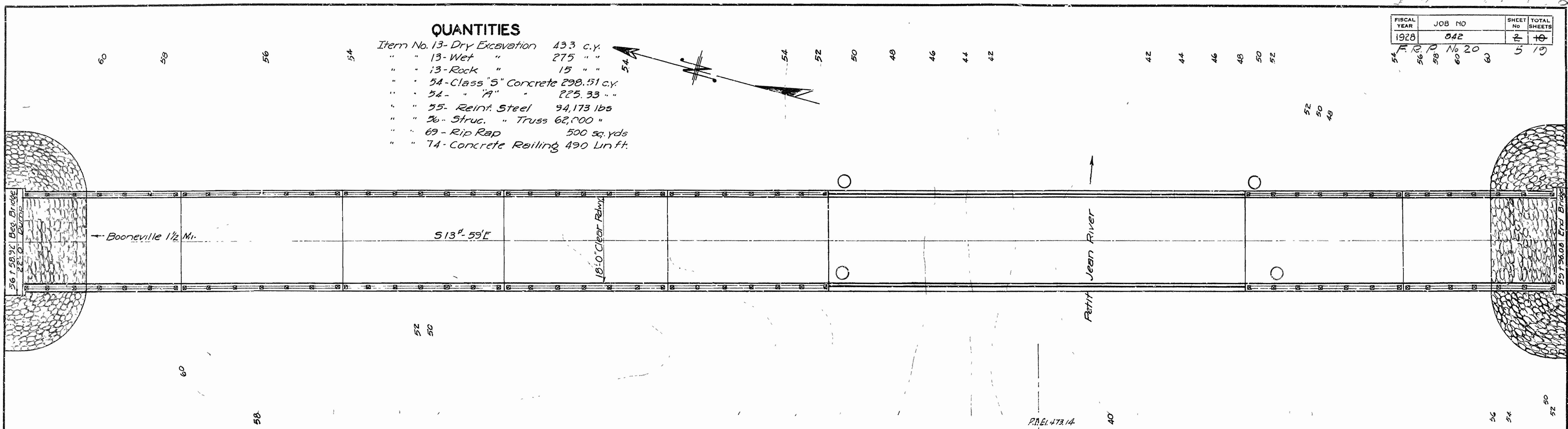
N.B. Garner
BRIDGE ENGINEER

BRIDGE NO. 935-936
937-671
DRAWING NO. 905

FISCAL YEAR	JOB NO	SHEET NO	TOTAL SHEETS
1928	042	2	10

QUANTITIES

Item No. 13- Dry Excavation	433 c.y.
" " 13- Wet "	275 "
" " 13- Rock "	15 "
" " 54- Class 5" Concrete	290.51 c.y.
" " 54- " " "	225.33 "
" " 55- Reint. Steel	94,173 lbs
" " 56- Struc. " Truss	62,000 "
" " 69- Rip Rap	500 sq. yds
" " 74- Concrete Railing	490 Lin ft.



For Details of R.C.G. Girder Spans, See Dwg. No. 1018
 For Details of Steel Truss Span, See Dwg. No. 1054
 For Details of Piers, See Dwg. No. 907.
 For Details of Bents No's 2, 3, 4, 5, and 6, See Dwg. No. 908
 For Details of Bents No's 1 and 7, See Dwg. No. 909

BRIDGE NO. 671

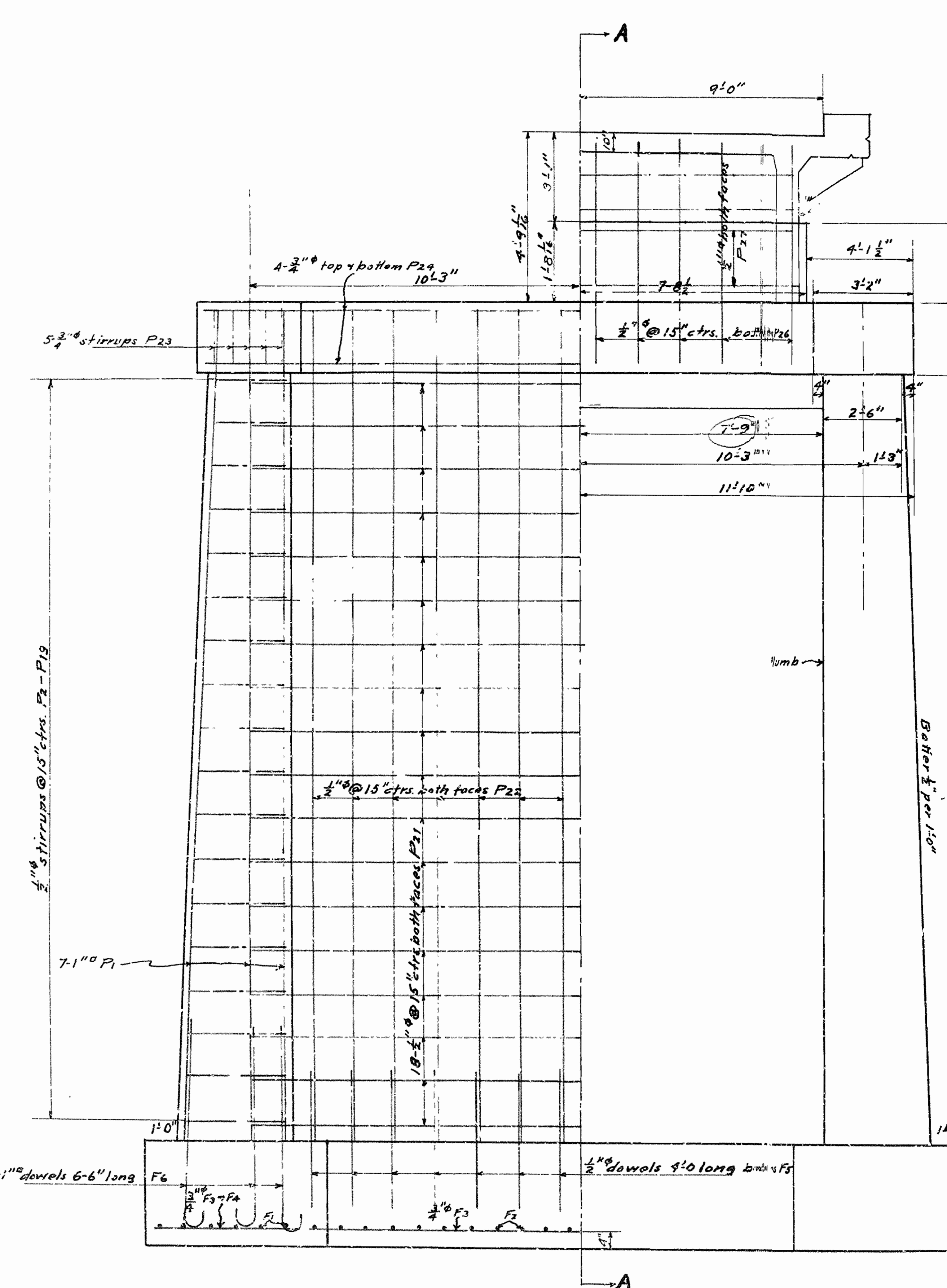
**LAYOUT OF
 BRIDGE OVER PETIT JEAN R.
 BOONEVILLE SANATORIUM ROAD
 LOGAN, CO.**

**ROUTE 116 SEC. 1
 ARKANSAS STATE HIGHWAY DEPARTMENT
 LITTLE ROCK, ARK.**

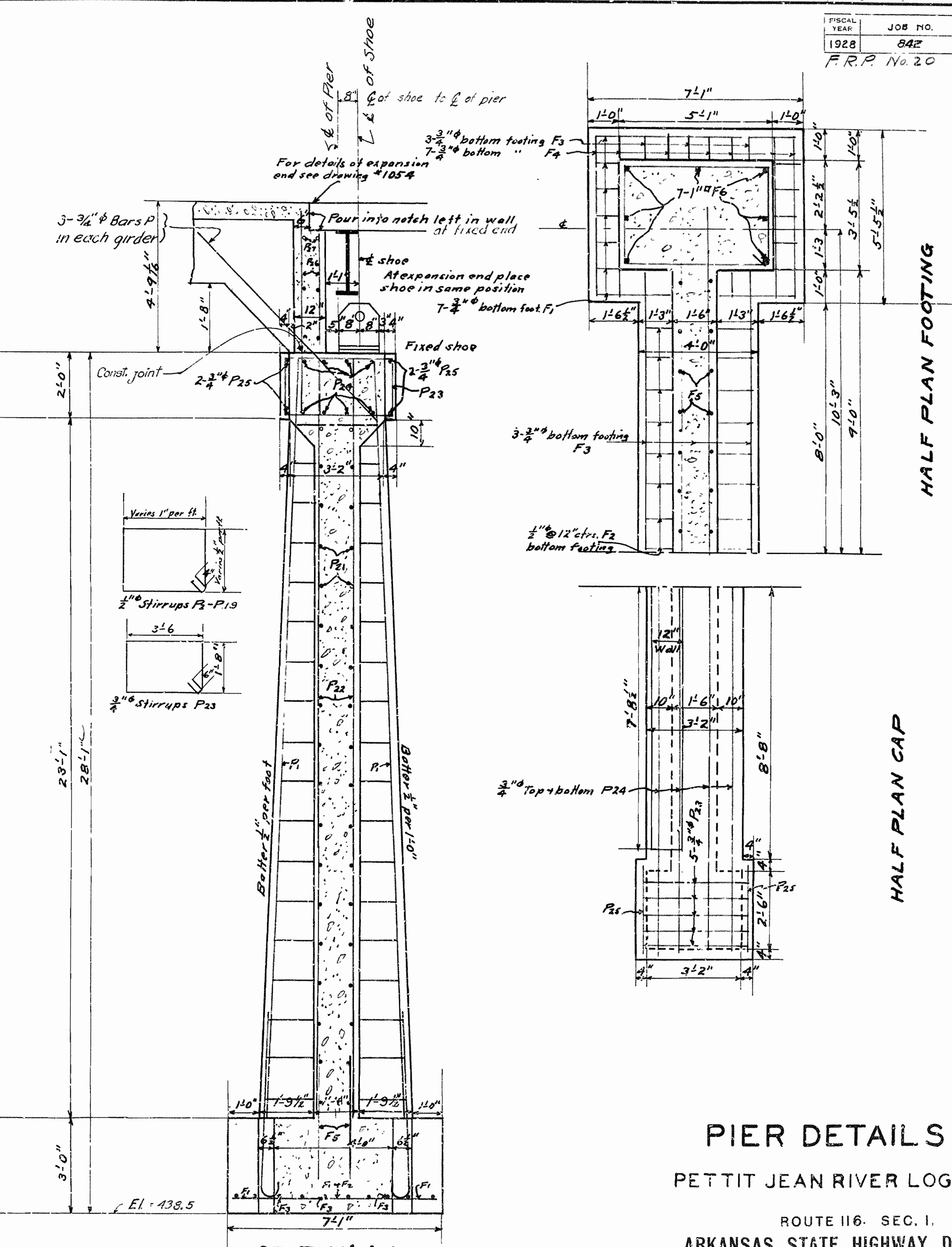
Drawn By: *Mac* Date: 6/20/28
 Traced By: *McGraw* Date: 6/23/28
 Checked By: *LB* Date: 7/1/28
BRIDGE NO. 671 Scale: 1" = 10' ft.
DRAWING NO 906

N.B. Gaver
 BRIDGE ENGINEER

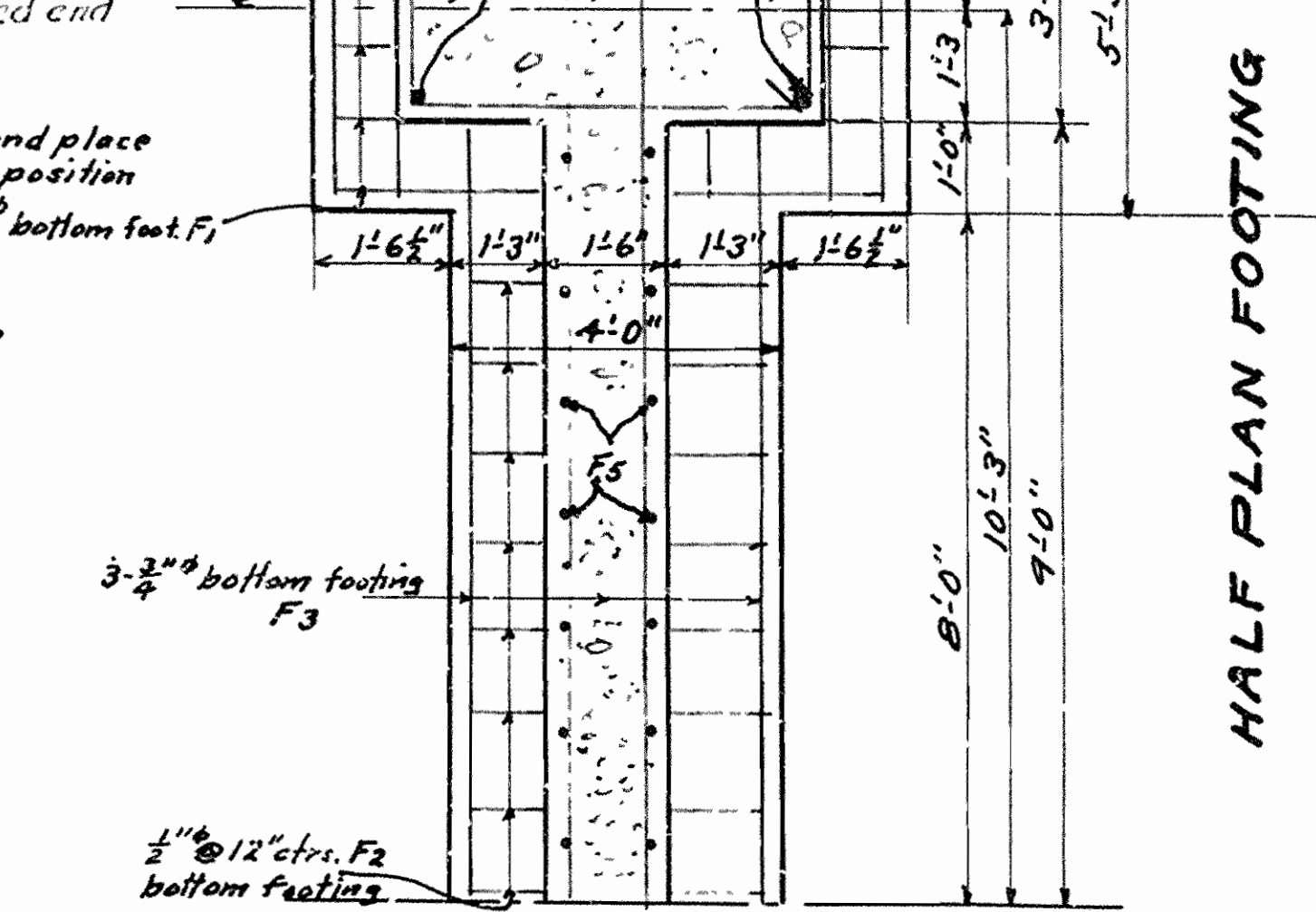
FISCAL YEAR	JOB NO.	SHEET NO.	TOTAL SHEETS
1928	842	7	10
F.R.P. No. 20		6 13	



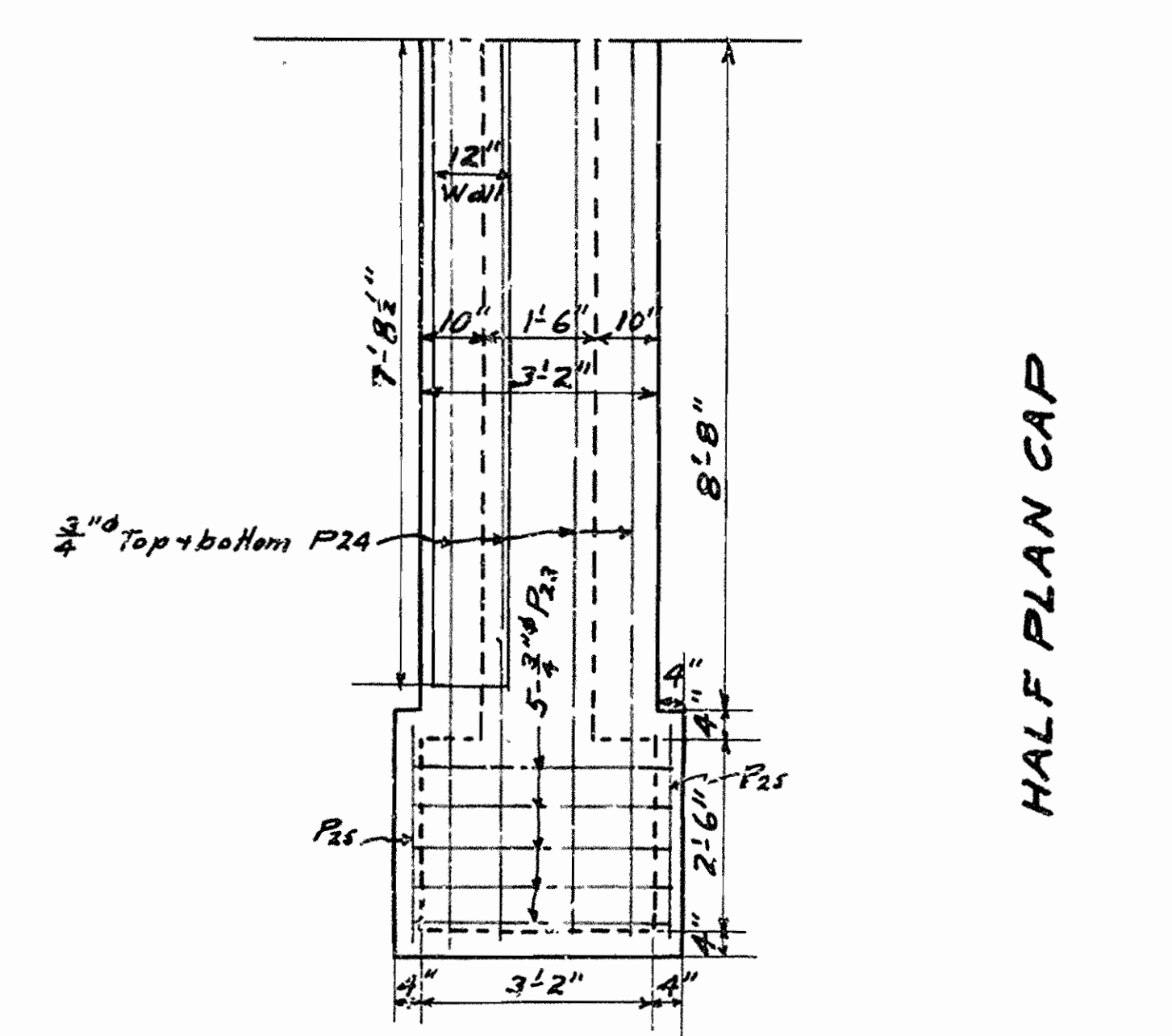
ELEVATION



SECTION A-A



HALF PLAN FOOTING



HALF PLAN CAP

PIER DETAILS
PETTIT JEAN RIVER LOGAN CO.

ROUTE 116. SEC. 1.
ARKANSAS STATE HIGHWAY DEPARTMENT
 LITTLE ROCK, ARK.

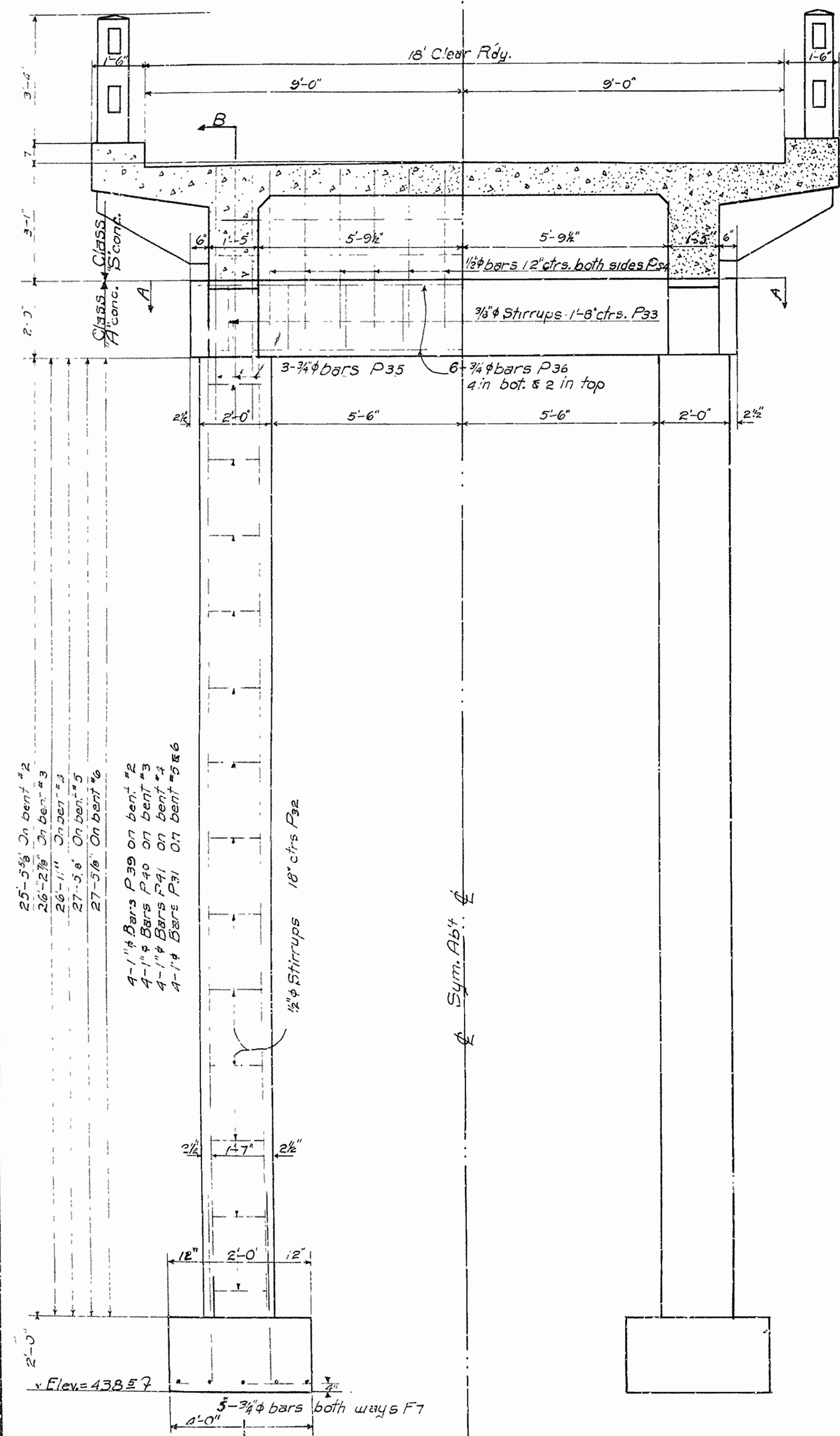
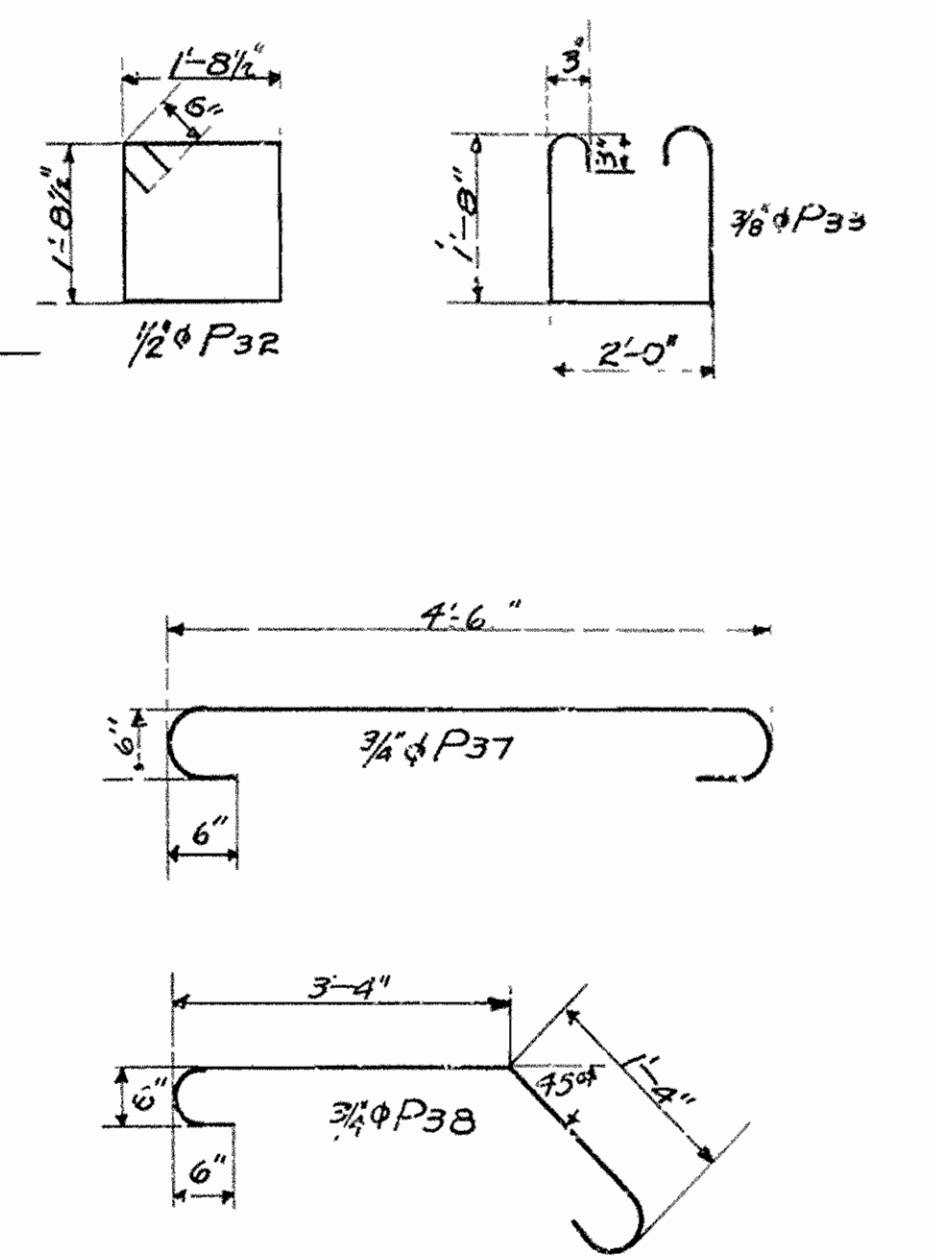
Drawn By: R.W.A. Date: 3-27-26
 Traced By: Date: _____
 Checked By: Date: _____
BRIDGE NO. 671 **DRAWING NO. 907**

R.R. Leaver
 BRIDGE ENGINEER

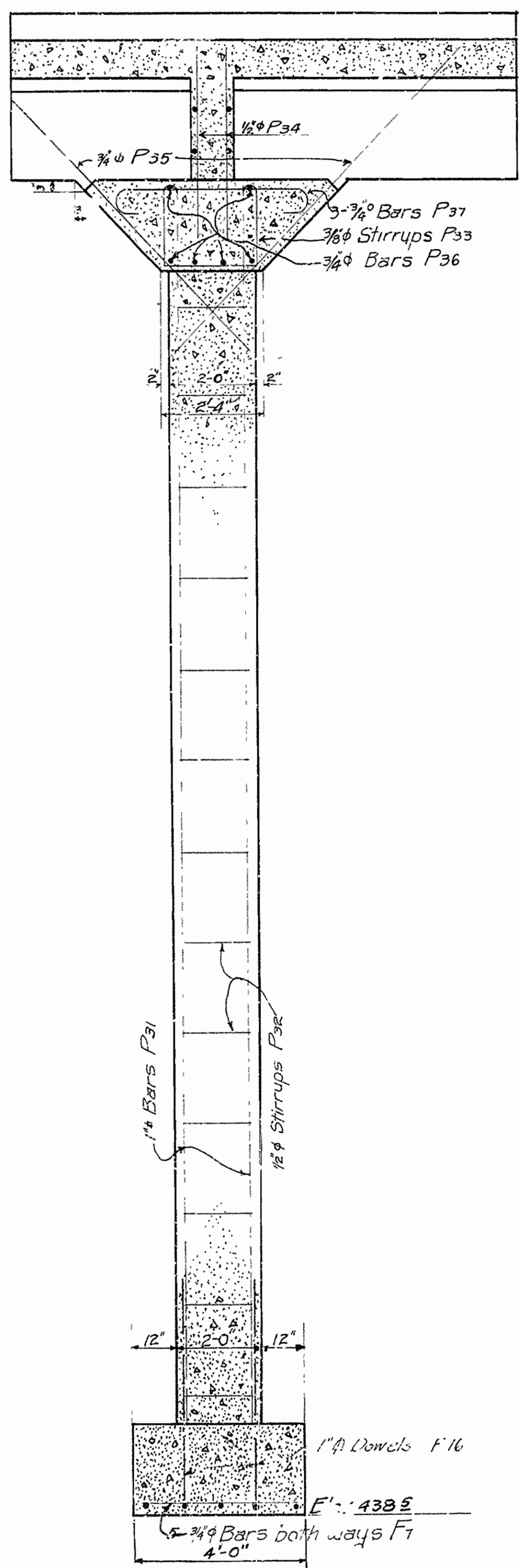
Scale: 1/2" = 1 ft.

FISCAL YEAR	JOB	SHEET NO.	TOTAL SHEETS
1928	842	4	10
F. R. R. No 20		7 13	

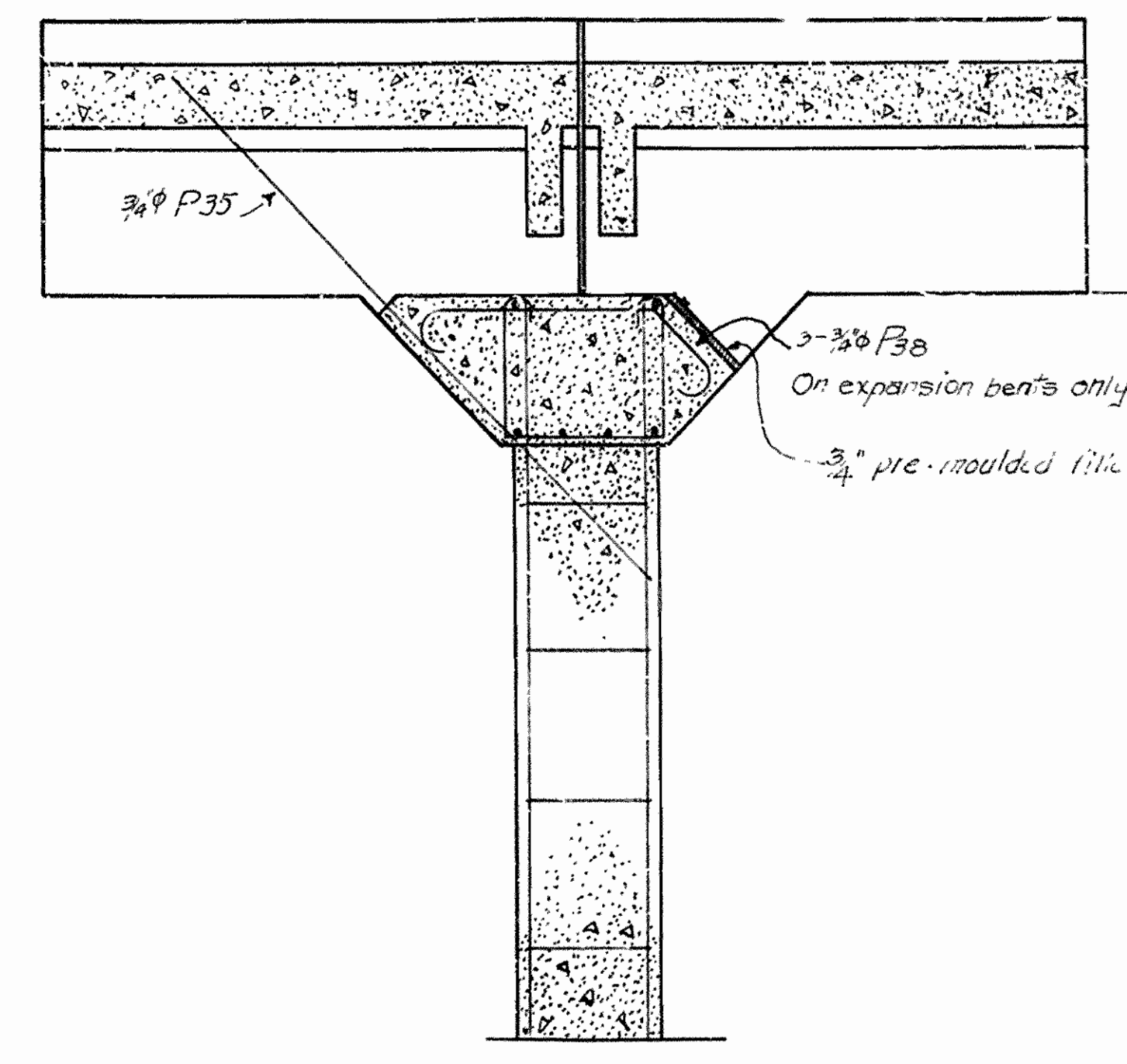
BENT REINFORCING STEEL



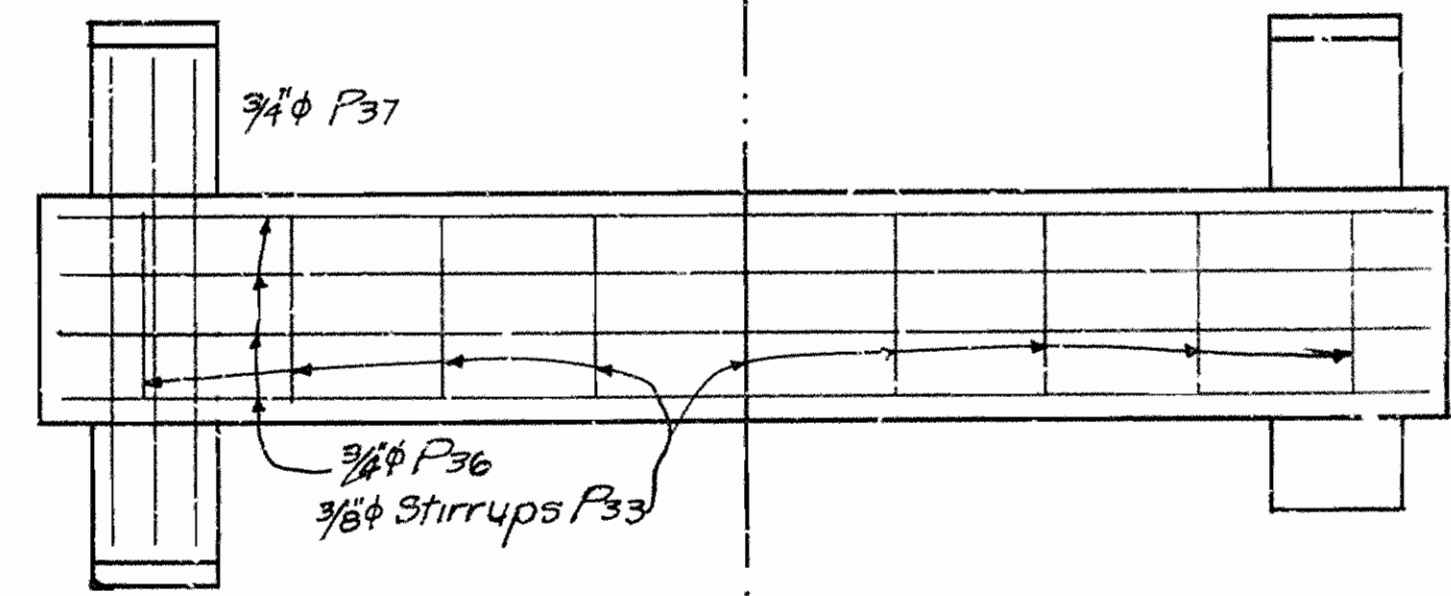
ELEVATION OF BENTS 5 & 6
Bents 2, 3 & 4 Similar except shorter



SEC. B-B FOR BENTS 5 & 6
SHOWING FIXED END
Bents 2, 3 & 4. Similar except shorter



SEC. B-B OF BENTS 3 & 4



HALF FIXED BENT HALF EXPANSION BENT

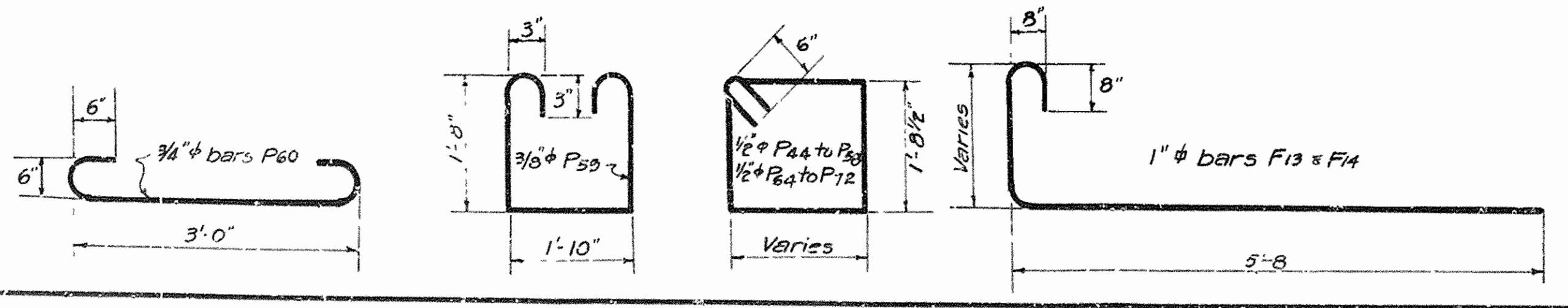
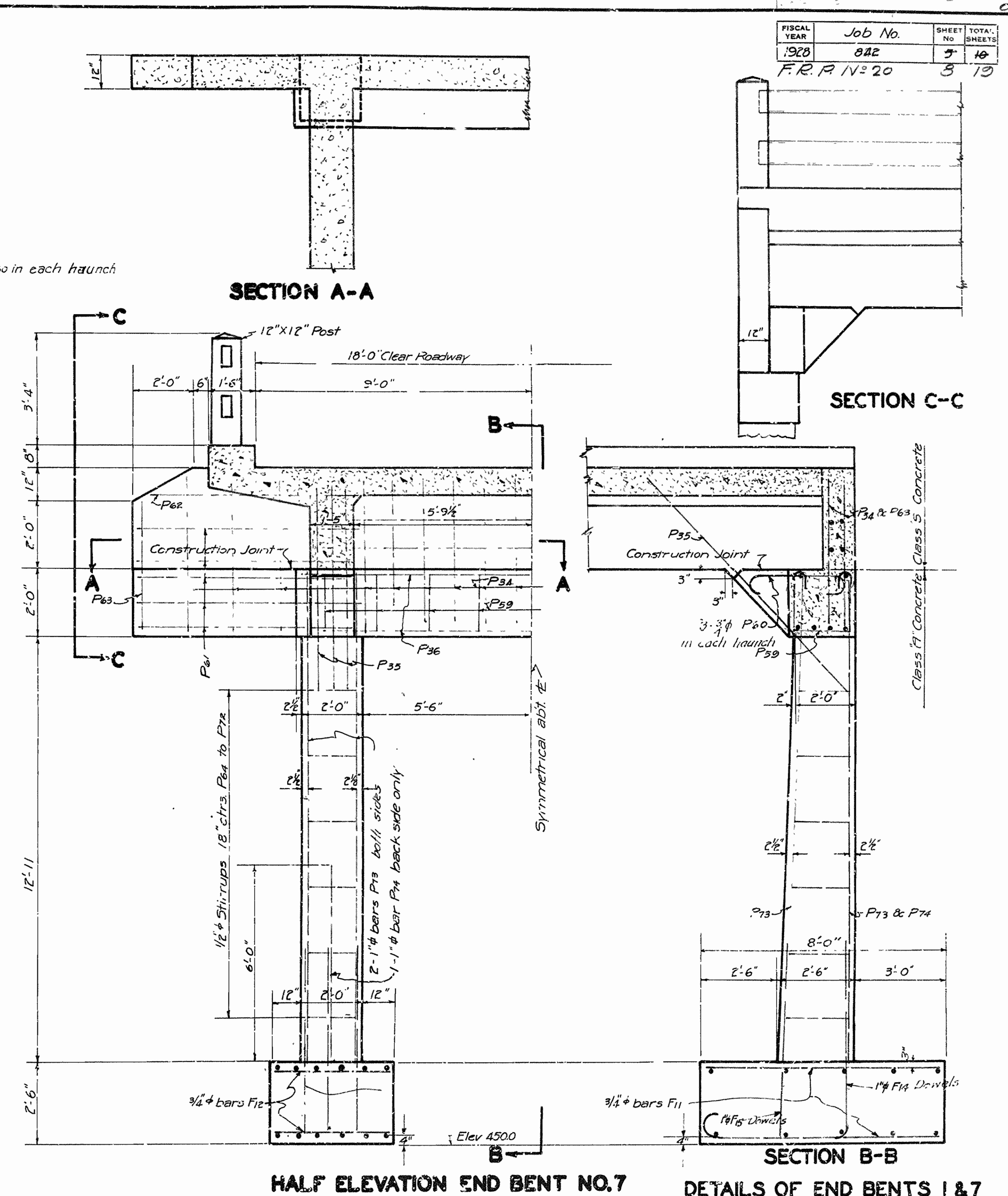
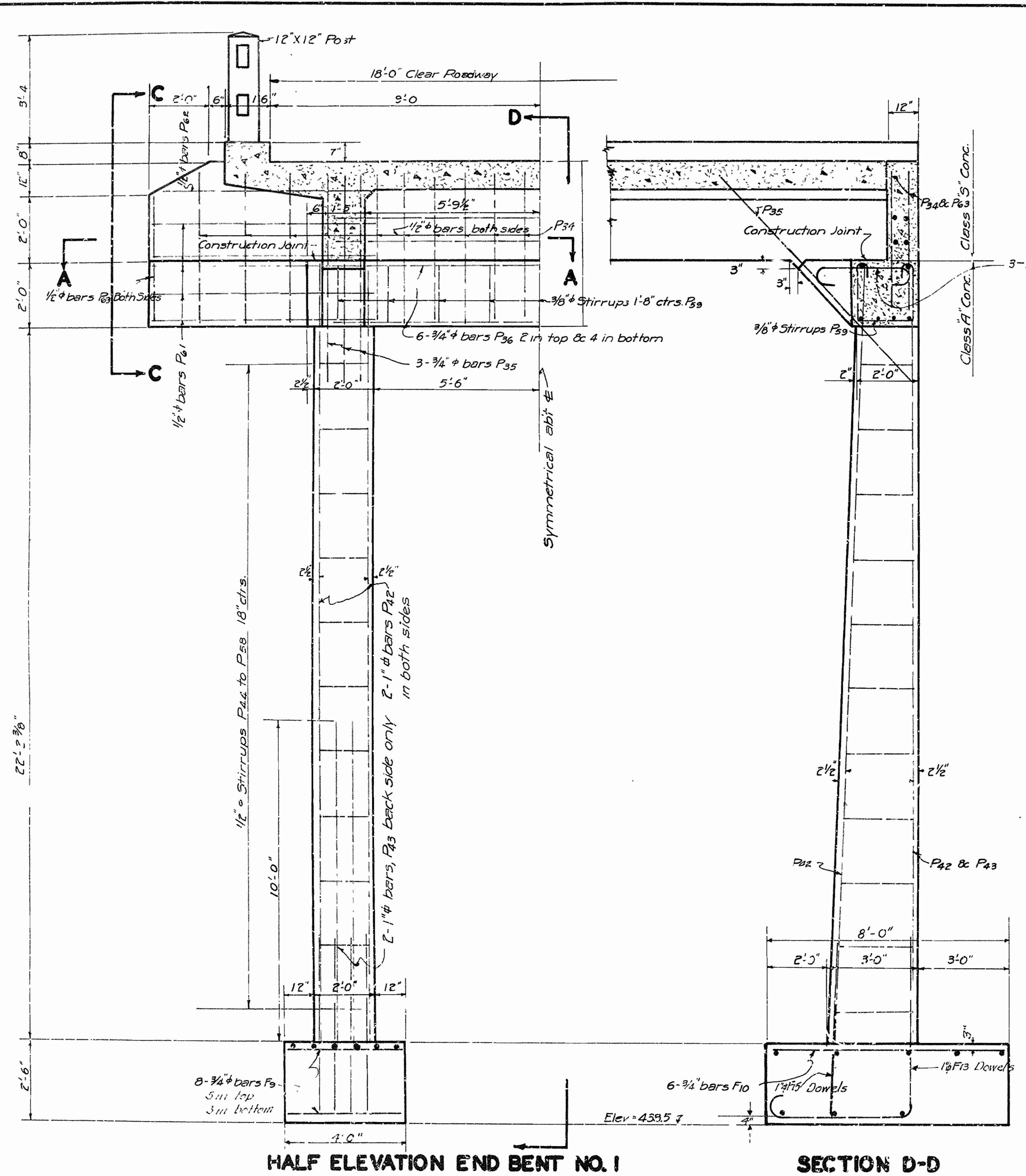
SEC. AA

DETAIL OF BENTS 2, 3, 4, 5 & 6
FOR BRIDGE OVER PETITJEAN RIVER
ON BOONEVILLE SANATORIUM ROAD LOGAN CO. ARK.

ROUTE 116 SEC. 1
ARKANSAS STATE HIGHWAY DEPARTMENT
LITTLE ROCK, ARK.
Drawn By: G.W.N. Date: _____
Traced By: R.B.B. Date: 6-22-28
Checked By: L.B. Date: 7/16/28
Scale: 1/2 in. = 1 ft.
BRIDGE NO. 671 DRAWING NO. 908

R.B.B.
BRIDGE ENGINEER

FISCAL YEAR	Job No.	SHEET No.	TOTAL SHEETS
1928	822	5	10
F.R.R. No. 20		3 10	



HALF ELEVATION END BENT NO. 1

SECTION D-D

HALF ELEVATION END BENT NO. 7

SECTION B-B

SECTION C-C

DETAILS OF END BENTS 1 & 7
 BRIDGE OVER PETIT JEAN RIVER
 BOONEVILLE SANATORIUM ROAD
 Logan County,
 ROUTE 116 SEC. 1
 ARKANSAS STATE HIGHWAY DEPARTMENT
 LITTLE ROCK, ARK.

Drawn By: Noe Date: 6/21/28
 Traced By: L. G. Grah Date: 6/22/28
 Checked By: Date: 7/1/28
 Scale: 1/2 in. = 1' ft.
 BRIDGE NO. 671 DRAWING NO. 909

M. D. Gaver
 BRIDGE ENGINEER